

THANK YOU FOR JOINING. LOOK FORWARD TO SAYING HELLO REAL SOON.

FOOT TO THE FLOOR

OCTOBER 26, 2023



THE UPFIT YOU DESERVE

LEGENDSOFTHEROAD.COM

OCT. 2023 SESSION AGENDA

- Poem
- Upfit Spotlight
- DeliveryCon *Tidbits*
- Same Van?! *Story in the UK*
- Lead with Legend *Checklist + Course*
- Facebook Group
- Upfitter Portal Shout-Out *with Tina Banman*
- Lost Keys Saved
- FAQ *Legend Floor + Shelving*
- Reclaiming The Spirit of American Manufacturing *with Jake Schwoch, TigerTough*

SPEAKERS



Brendan Church
Marketing Director,
LEGEND



Jake Schwoch,
Production Manager,
TigerTough

Tina Banman
Inside Sales, LEGEND



Jerry Simpson
Ship-Thru Sales, LEGEND



A poem from ChatGPT...

***Welcome, dealers, to our session, "Foot to the Floor,"
Where legends are made, and we explore even more.
In the world of upfitting, where you shine so bright,
We're here to ignite your spirits, like day turns into night.***

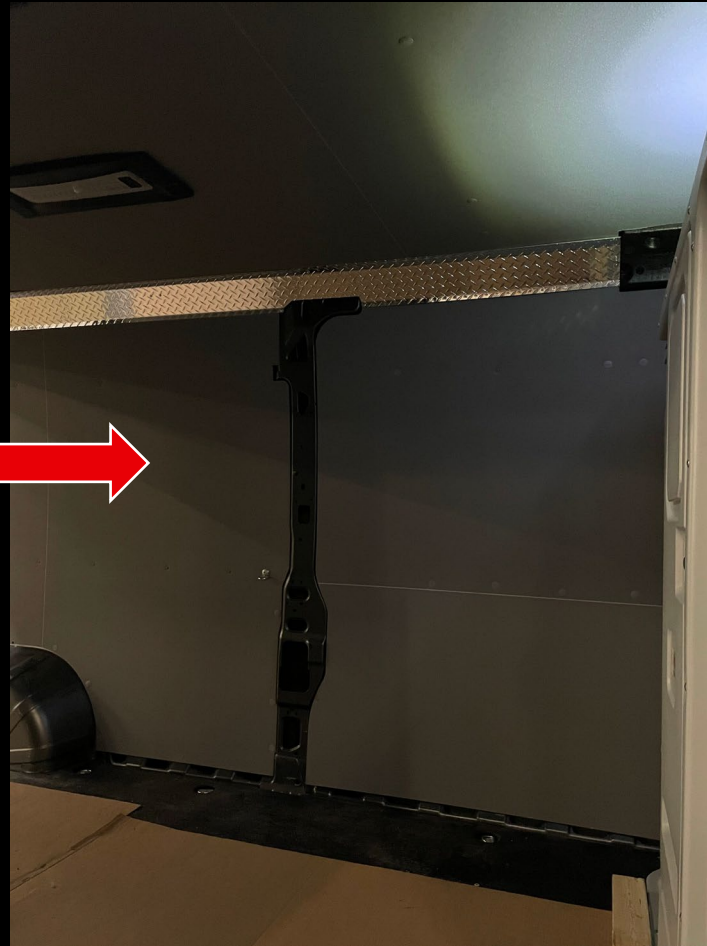
***With Legend Fleet Solutions, you lead the way,
Transforming vans into legends, come what may.
So buckle up, dear friends, let your dreams explore,
In this October journey, with "Foot to the Floor."***



UPFIT SPOTLIGHT



U.S. Upfitters | Lombard, IL





Las Vegas, October 16-18, 2023

Tidbits from Networking & Listening



Spec'ing Your Vehicle

- Get a pilot build and show the fleet manager – a lot of fleet managers may not know what the inside of their vehicle is like and its critical you do a pilot and get them to step inside and decide if this is what you want your employees working in.
- Safety is a must to ensure your employees are safe on the job site and there isn't the risk of insurance claims or lawsuits



SAME VAN?! STORY IN THE UK



Nat Wigley • 2nd
Director at Greenscape
Seriously that's the same van!!?!? 🤯



Sam Stewart • 2nd
Commercial Sales Controller at Hendy Group
Love this! The amount of used vans you see come back after 2/3/4 years with absolutely ruined interiors is mind blowing 🤯



Rachel Bray • 2nd
Taking the stress out of writing by doing it
That's quite a transformation!!!





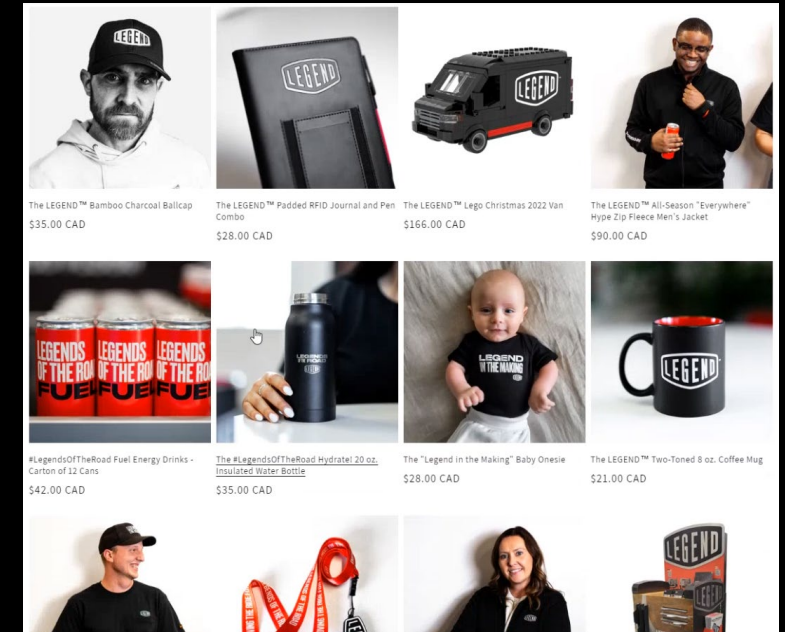
LEAD WITH LEGEND

Every team member who finishes the course automatically receives \$25 at Brand Store!

“ I am the supervisor over the Design Analyst here at *****. A colleague recently sent over the hyperlink for **Lead with Legend** and I found it **incredibly informative!** So much so, that I have forwarded it over to my entire Design Team who are constantly spec'ing your product to our clients, so it will benefit them just as much. ”

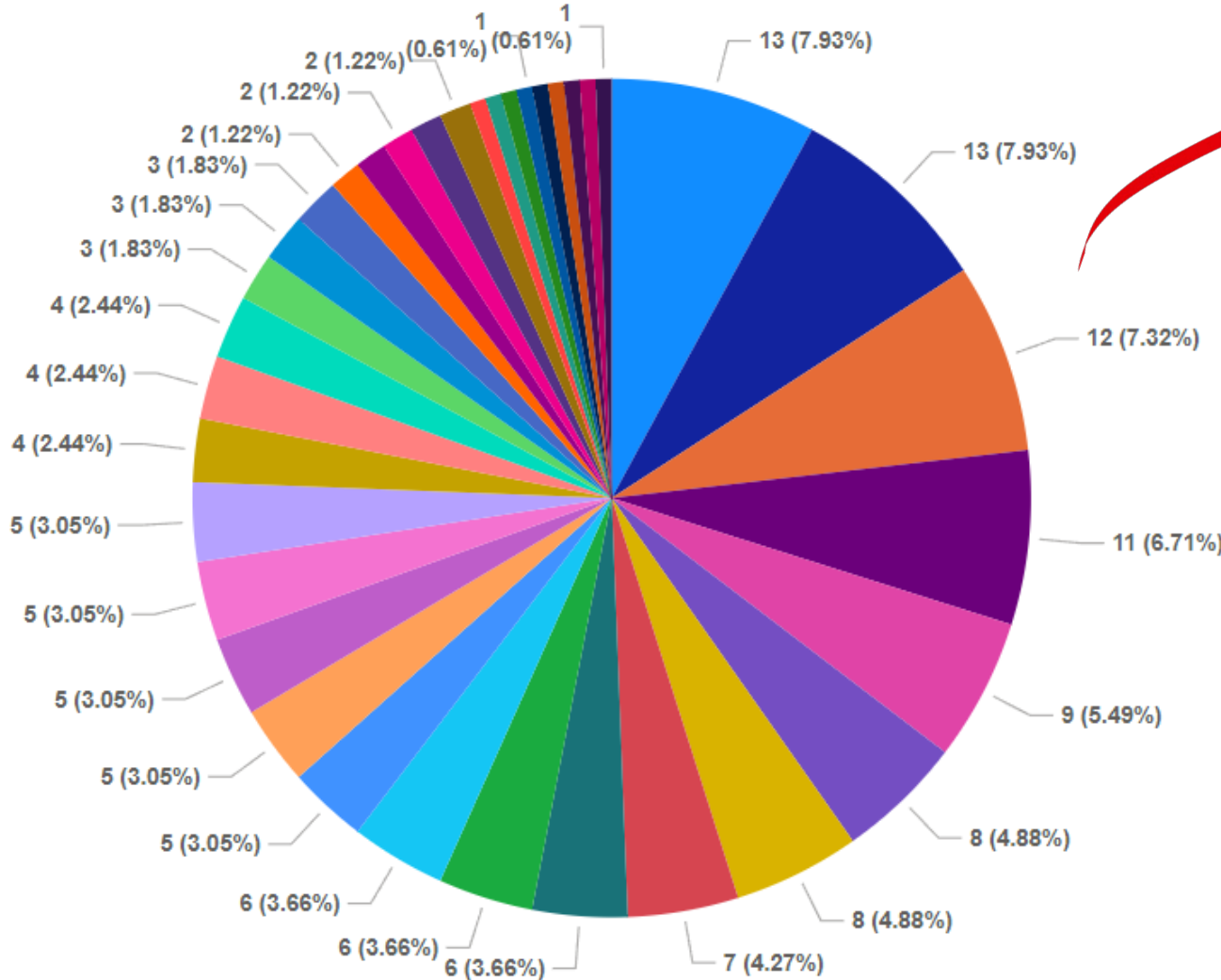


30 MINUTES OF
INVALUABLE TRAINING!





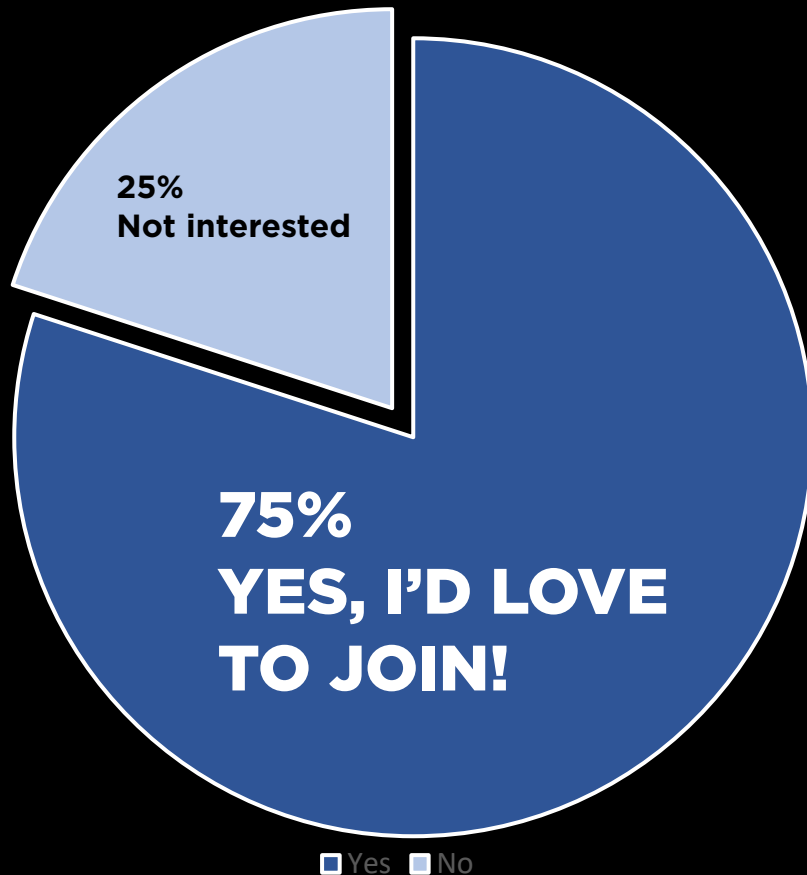
PORTAL ORDERS BY CUSTOMER



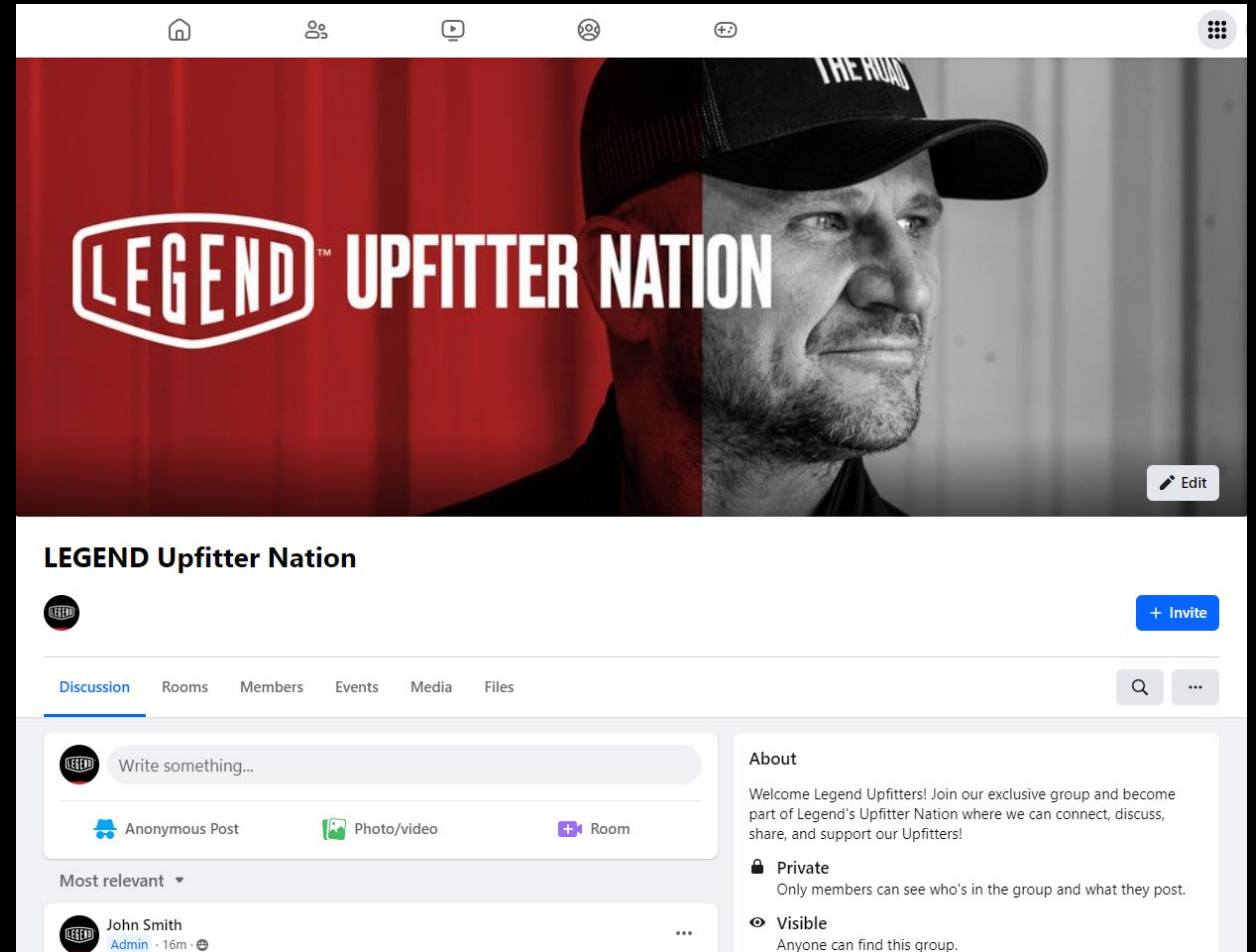
- Customer Name
- #1 Advantage Outfitters LLC
 - #2 Allied Body Works Inc.
 - #3 Prisco Vans Ltd
 - #4 American Bobtail Inc.
 - #5 Commercial Van Interiors - Phoenix
- ...

We asked you last time...

Would you be interested in joining a Facebook Group of Upfitters nation-wide to *share install ideas, ask questions, and more?*



JOIN THE FB GROUP NOW!



LOST KEYS SAVED

When all keys are lost, not all is lost!

**We have put several new measures
in place to prevent lost keys and
locked out drivers!**

1. Warranty card
2. Label with the lock code on the padlock body
3. QR under the plastic cover.



FAQ Do Legend floors work with shelving in EV's?

Yes, with all shelving brands!
 It works with the no-drill fastener kit that comes with EVOLVE floors from Legend. We send enough fasteners so it works with any type of shelving. This floor is fully crash-tested.



GUEST SPEAKER

RE-CLAIMING THE SPIRIT OF AMERICAN MANUFACTURING

WITH **JAKE SCHWOCH**, TIGERTOUGH



SEE YOU NEXT TIME, ON

DECEMBER 14/23

WE WILL TAKE A BREAK IN NOVEMBER (TO LET YOU ENJOY TURKEY!) AS WE ALL PUSH HARD TO END OUT THE YEAR STRONG!



THE UPFIT YOU DESERVE

LEGENDSOFTHEROAD.COM